

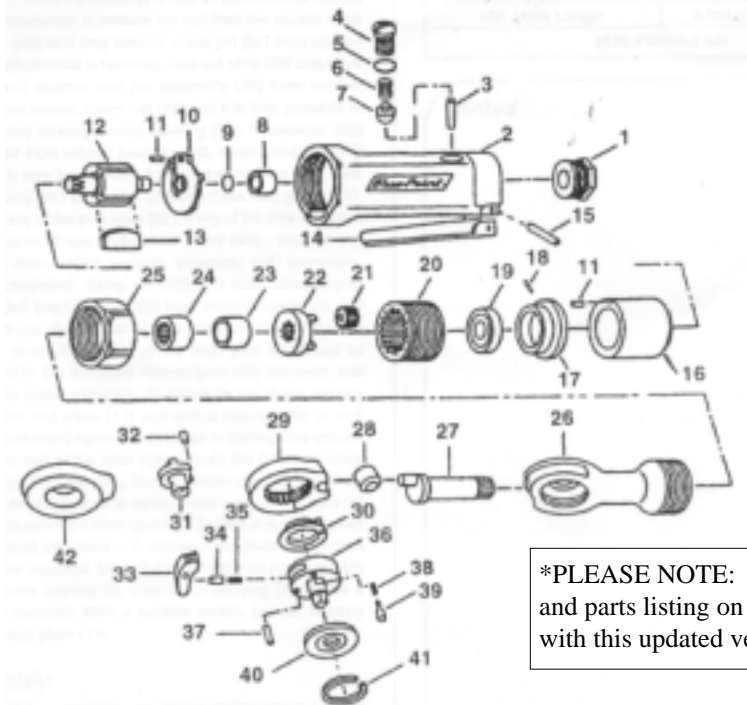
PARTS ANNOUNCEMENT #20325
DATE: FEBRUARY 10, 2003
AS OF AUGUST 5, 2002

INSERT INTO SPCAT3
SECTION N, PAGE 31

PARTS SUPPLEMENT TO:

FILE INDEX: 2.8
AT200D & AT205A

AT200D & AT205A Ratchet Wrenches (Reissue*)



- WARNING**
Wear safety goggles (operator & bystanders).
- WARNING**
Wear hearing protection (operator & bystanders).
- WARNING**
Avoid prolonged exposure to vibration.
- WARNING**
Read & follow instructions before using power tools. Use accessories rated at tool RPM or higher.

***PLEASE NOTE:** Please replace the exploded view and parts listing on page N-31 of your SPCAT3 catalog with this updated version of the AT205A.

Key	Stock Number	Description	Key	Stock Number	Description
1	AT200D-2	Hose adaptor w/ Screen	26	AT200D-30A	Ratchet Housing
2	AT200B3	Motor Housing	27	AT200A-34	Crankshaft
3	AT200A-11	Plunger	28	AT200-35	Drive Bushing
4	AT700-5A	Valve Screw	29	AT200A-36	Yoke
5	AT700-6	O-Ring	30	AT200C-53	Washer and Pin Assembly
6	AT700-7	Spring	31	AT200C-38	Reverse Button
7	AT700-8	Valve	32	AT200-37	Dowel Pin
8	AT200-8	Needle Bearing	33	AT200-39	Ratchet Pawl
9	AT200B-9	Rotor Retainer	34	AT200-40	Lock Pin (for pawl)
10	AT200-10	Rear End Plate	35	AT200A-44	Lock Pin Spring
11	AT100-14MP2	Dowel Pin (2)	36	AT200C-45	Ratchet Anvil (AT200D)
12	AT200-15	Rotor	36	AT205-45	Ratchet Anvil (AT205A)
13	AT200-16	Rotor Blade (4)	37	AT200-46	Dowel Pin
14	AT700-4	Throttle Lever	38	AT200A-47	Spring (2)
15	AT100-8	Throttle Lever Pin	39	AT200A-48	Pin (2)
16	AT200-17	Cylinder	40	AT200-49	Thrust Washer (AT200D)
17	AT200A-19	Front End Plate	40	AT205-49	Thrust Washer (AT205A)
18	AT200-18	Pin (For Front End Plate)	41	AT200-50	Redaining Ring
19	AT700-30MP2	Ball Bearing	42	AT200D-22	Boot
20	AT200-24	Internal Gear	-	AT200D55	Serial Number Plate (AT200D)
21	AT200-25	Idler Gear (3)	-	AT205A-55	Serial Number Plate (AT205A)
22	AT200-26A	Idler Gear Plate w/ 3 Pins	-	AT100-34	Screw for Serial No. Plate (2)
23	AT200-27	Bushing (Spacer)	-	SS1373	Warning Icon Label
24	AT200-28	Needle Bearing	-	AT700A-38A	Warning Label
25	AT200-29	Clamp Nut			

PRINTED IN U.S.A.

©2003 Snap-on Tools Company Kenosha, WI
 Copying permitted for Snap-on customers only.
 SALES COMMUNICATIONS DEPARTMENT

+Stock			+List	+Price	+Inv.	+Ord.
Number	+Description	Superseded	Price	Category	Class	Pt.
AT200D-2	Hose adaptor w/ Screen	-	*	*		1
AT200B3	Motor Housing	-	*	*		1
AT200A-11	Plunger	-	*	*		1
AT700-5A	Valve Screw	-	*	*		1
AT700-6	O-Ring	-	*	*		1
AT700-7	Spring	-	*	*		1
AT700-8	Valve	-	*	*		1
AT200-8	Needle Bearing	-	*	*		1
AT200B-9	Rotor Retainer	-	*	*		1
AT200-10	Rear End Plate	-	*	*		1
AT100-14MP2	Dowel Pin (2)	-	.50	C		1
AT200-15	Rotor	-	*	*		1
AT200-16	Rotor Blade (4)	-	*	*		1
AT700-4	Throttle Lever	-	*	*		1
AT100-8	Throttle Lever Pin	-	*	*		1
AT200-17	Cylinder	-	*	*		1
AT200A-19	Front End Plate	-	*	*		1
AT200-18	Pin (For Front End Plate)	-	*	*		1
AT700-30MP2	Ball Bearing	-	14.06	C		1
AT200-24	Internal Gear	-	*	*		1
AT200-25	Idler Gear (3)	-	*	*		1
AT200-26A	Idler Gear Plate w/ 3 Pins	-	*	*		1
AT200-27	Bushing (Spacer)	-	*	*		1
AT200-28	Needle Bearing	-	*	*		1
AT200-29	Clamp Nut	-	*	*		1
AT200D-30A	Ratchet Housing	-	53.70	C		1
AT200A-34	Crankshaft	-	*	*		1
AT200-35	Drive Bushing	-	*	*		1
AT200A-36	Yoke	-	*	*		1
AT200C-53	Washer and Pin Assembly	-	*	*		1
AT200C-38	Reverse Button	-	*	*		1
AT200-37	Dowel Pin	-	*	*		1
AT200-39	Ratchet Pawl	-	*	*		1
AT200-40	Lock Pin (for pawl)	-	*	*		1
AT200A-44	Lock Pin Spring	-	*	*		1
AT200C-45	Ratchet Anvil (AT200D)	-	*	*		1
AT205-45	Ratchet Anvil (AT205A)	-	*	*		1
AT200-46	Dowel Pin	-	*	*		1
AT200A-47	Spring (2)	-	*	*		1
AT200A-48	Pin (2)	-	*	*		1
AT200-49	Thrust Washer (AT200D)	-	*	*		1
AT205-49	Thrust Washer (AT205A)	-	*	*		1
AT200-50	Redaining Ring	-	*	*		1
AT200D-22	Boot	-	*	*		1
AT200D55	Serial Number Plate (AT200D)	-	1.90	D		1
AT205A-55	Serial Number Plate (AT205A)	-	*	*		1
AT100-34	Screw for Serial No. Plate (2)	-	*	*		1
SS1373	Warning Icon Label	-	*	*		1
AT700A-38A	Warning Label	-	*	*		1

*CURRENTLY ON FILE. REFERENCE BRANCH PRICE BOOK FOR PRICING.

THE COMMODITY CODE FOR ABOVE IS: 8467115020

THE PRODUCT FAMILY CODE FOR ABOVE IS: 004030990990